

StockMate Android – Changes from 11.1 to 11.2

Go to the end
for latest changes

Connecting to StockMate

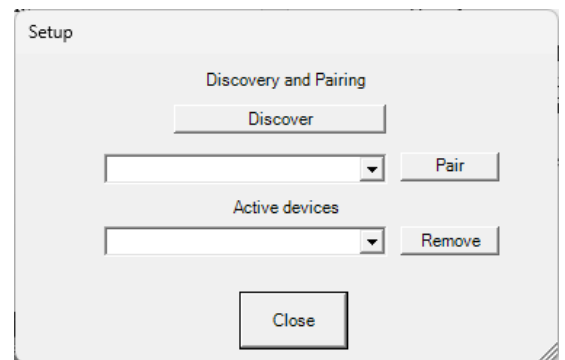
We have removed FTP communication from the standard Android link. This option has not worked since Android 11 due to security changes, and older versions of Android are no longer supported by Google. Bluetooth is now the standard method for communication.

We've improved support for counting an outlet on multiple Android devices. In earlier versions only one Bluetooth device was remembered by StockManager. Now you can add multiple devices and select which device to use from a drop-down menu.

To add multiple devices, click on **Link to StockMate** as usual, then click **Setup**.

Make the devices visible via Bluetooth by tapping the **Pair Devices** button in the StockMate Bluetooth screen.

Click **Discover** in the setup screen on the PC.

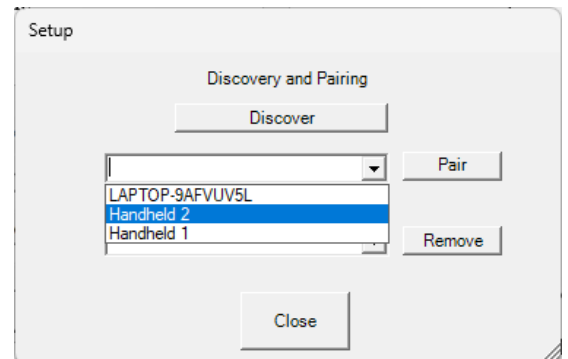


Your devices will appear in the drop-down menu.

Select a device and click **Pair**. If the devices have not been paired previously, Bluetooth pairing will initiate.

Once paired, the selected device will appear in the **Active Devices** drop-down.

Click **Close** when all your devices have been added.

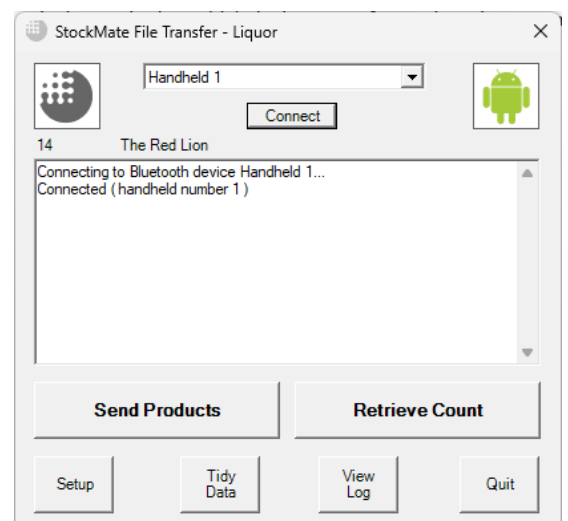


Your devices will appear in the drop-down on the main connection screen.

Select which device you would like to communicate with, then click **Connect**.

You can now **Send Products** or **Retrieve Count** as usual.

If you only have a single device added in StockManager, the drop-down will not appear and works as in previous versions.

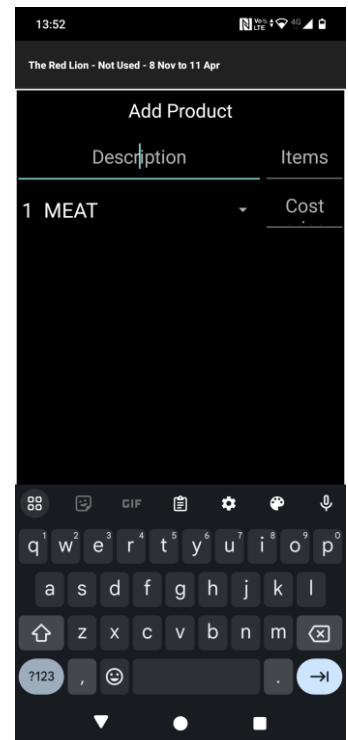


Add Quick Product(s) (Food only)

Added to the **Options** menu in the **Count** screen, this function enables you to add a product by entering only a description and section, plus optionally a count and cost price. The product is added when enter is pressed in the cost price field.

If **Add Quick Products** option is selected, you can add more products in sequence. The section menu will open after a description is entered only for the first product. Pressing enter in the description field when no description is present will return you counting mode.

For speed of operation, the product list is not refreshed when using the quick add function.



Master product codes

If an outlet had a master outlet, StockMate now checks any new product codes with the codes in the master. This prevents clashing product codes being generated when adding new products. The codes referenced are generated on **Prepare Data** on the laptop. If the master has also been sent to StockMate, codes are also checked against the products in the master's product data.

Master outlets in StockMate are also updated when you add products to any child outlets to further reduce the chance of clashing codes being generated.

Care still needs to be taken when multiple devices are being used to count a single outlet as each device has its own data and cannot check codes with those generated on another device.

Automatically generated product codes

This has been updated along with the automatic code generation in StockManager. Please see the StockManager documentation for details of how the new method works.

Add Product

Adding a product also adds it to the master in StockMate if available. This helps keep products and codes consistent across related outlets.

The updated automatic code generation method applies here, so it should be very rare to not get an automatically generated code.

An **X** button has been added next to the code text box which clears the contents and opens the keyboard so you can specify your own code.

In previous versions, a **ZZ code** could be assigned by entering ZZ in the code box then tapping enter. This would generate a complete 5-letter code (e.g., ZZ123). This feature has been extended to allow you to specify your preferred code root. To do this, tap the **X** button, enter the start of your code (e.g., BB) then tap the **Code** label to the left of the code text box. This will complete the 5-letter code with the next available code (e.g. BB123).

Import Product

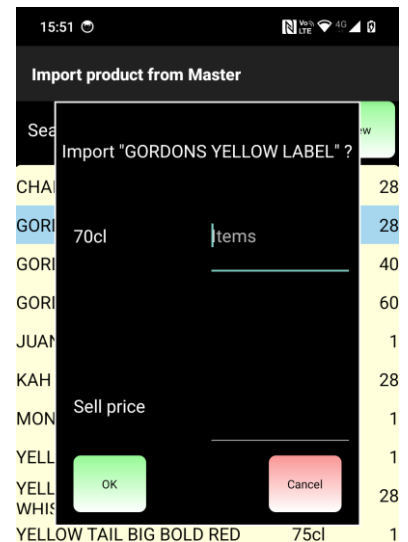
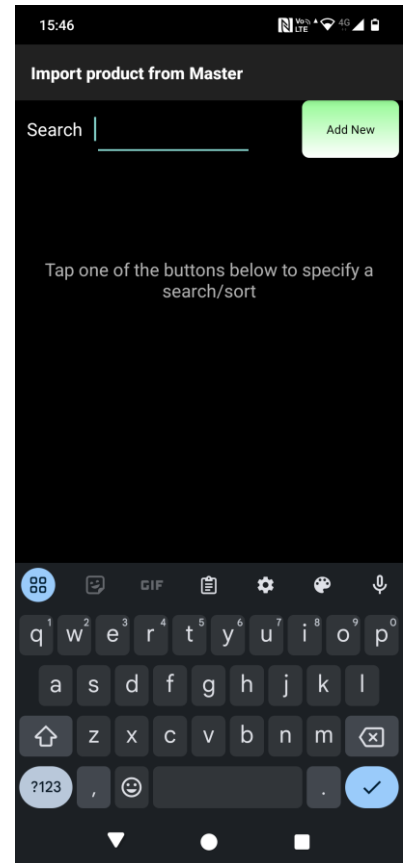
If an outlet has a master, selecting the Import Product option will take you directly to the master. This means that outlets with a master can only import from the master.

When you tap the **Desc** button for description search, the search text box is now displayed at the top of the screen. This will remain visible until you exit **Import Product**.

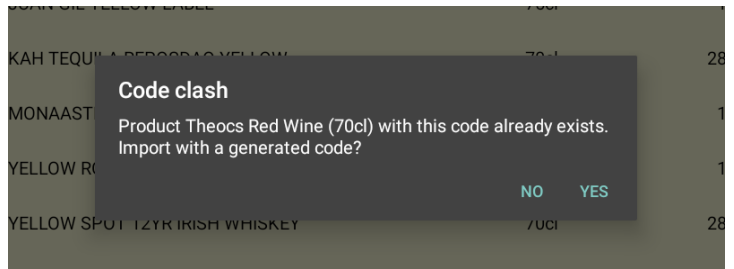
An **Add New button** is also displayed, which enables you to add new products from the import screen. This makes it quicker when setting up a new outlet as you don't need to keep switching between **Import Product** and **Count** screens. To perform additional description searches, tap in the search text field.

After selecting a product for import, you can optionally enter a count and selling price (or cost price in StockMate Food).

This is most useful when setting up a new outlet, as it allows you to count as you are importing products.



If you select a product with a code which clashes with an existing product, you have the option to continue with the import but allow StockMate to generate a new code.



Bluetooth

Whilst sending files via Bluetooth is extremely reliable, there are still very rare circumstances where file transfer could be incomplete, or data sequencing could have caused file contents to be mixed, giving errors in StockMate. File transfer has been changed so that files are sent sequentially rather than in one block, and the file sizes are checked for missing data. You may notice Send Products and Retrieve Count taking more time because of these changes.

We have added a **Restart Bluetooth** button on the Bluetooth screen. If you have problems connecting the PC to the handheld, tapping this button will correct the error in most cases.

Authorisation

The way we authorise StockMate installations has been changed to facilitate subscription licences and to allow optional extras such as camera barcode scanning (see below). Your StockMate license is now linked to your StockManager User ID. The communication to our server is much quicker and reliability has been improved.

Updates

If a minor update is available and the device is connected to the internet, you will be informed when you open StockMate. You will be able to download and install the update immediately.

Audit trail

If a product is imported from another outlet, the source outlet is indicated in the audit trail.

Outlets

If an outlet has been counted and the data not been retrieved, it will be highlighted in red in the outlets list.

Outlets	
Barney s (27)	23 Jan
Master (1000)	12 Oct
The Plough (18)	19 Oct
The Red Lion (14)	11 Apr
The Wheatsheep (30)	20 Aug

Barcodes

Products no longer have any restriction on the number of barcodes that can be assigned. This is most useful if you count some product ranges as a single product in StockManager, such as different flavours of crisps or mixers.

The barcode screen has been updated to reflect unlimited barcodes. The barcode list displayed is now scrollable, as the product lists are.

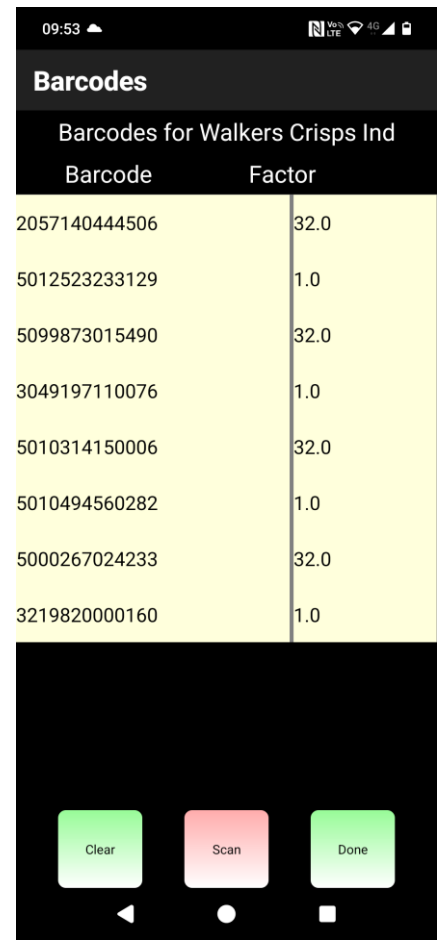
Tap on the barcode in the list to change its barcode factor

Long tap on a barcode to delete it from the product.

Scanning a barcode whilst on the barcodes screen will assign it to the selected product. If the barcode is already assigned to the selected product, you can edit its factor.

If the barcode is assigned to a different product, you will be shown a warning and asked if you would like to reassign the barcode to the selected product.

If there is a product with a matching code in the master outlet, the barcode changes will be applied to the master.



Unknown barcodes

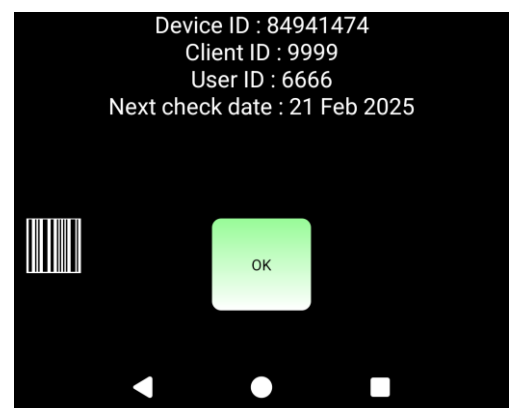
For outlets with a master, StockMate will try and find a match for a scanned barcode in the master. If one is found and a product exists in the current outlet with the same description and size description, the barcode will be automatically assigned, and the product counting screen displayed.

If the product in the master has a matching product code, but different description or size description, you will be shown the product description and size and asked if you want to assign the barcode anyway. Answering no to this prompt then displays the normal Unknown Barcode options.

Outlets with a master may only import from the master.

Camera Barcode Scanning

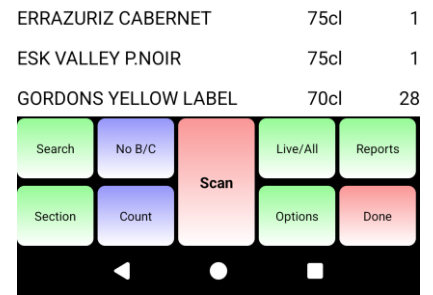
You can now scan barcodes using the device's camera. This is a separate feature that requires authorisation by Greyeye. When enabled, you will see a barcode at the bottom-left on the copyright screen when you start StockMate.



Camera scanning is switched on by tapping the **Scan mode on** item in the **Options** menu on the count screen.

When activated, the available functions change, and a **Scan** button will be displayed on the count screen.

Pressing **Scan** opens the scanning preview image.



To scan a barcode, point the crosshairs at the barcode. When the barcode is recognised, the handheld will beep, and if the barcode is assigned to a product, the product count screen will be displayed.

There is a **Torch on** button for low light situations if your device has a flash, and a slider which you can use to zoom in and out.

The quality and speed of scanning depends on the quality of the camera and the general performance of the device.

For more about the barcode scanning, see this file C:\Stocks8\training\Android_Scanning.pdf

Whilst in scan mode, the camera will be switched on and controlled by StockMate. On some devices this can cause issues which prevent barcode scanning from working correctly. If you have problems with scanning, turn off the **Faster Scan** setting in the settings screen. This causes the camera to be released between scans, so startup of scanning is slower but more reliable. You should also use this option if you use the scanning feature rarely, as it will reduce the amount of battery the camera uses on the device.



Minor Changes

11.2b

- If no subsections are defined, always add product to subsection 1 to prevent crash

11.2c

- Add setting to enable/disable update messages
- Change the way barcodes form loads for older android versions

11.2d

- When setting the barcode factor, show the barcode number in the dialogue
- Change the number of barcodes visible on the barcode screen
- When importing a product after scanning an unknown barcode, always search outlets in outlet id order

11.2e

- Change Location shows all locations again as this was causing a crash in certain circumstances
- Toggle Enable Updates setting to reset the 7 day timer for showing update messages

11.2f

- Some warning messages weren't showing correctly after selecting an outlet